

---

## Modification for Rev. B to Rev. C

Rev. C boards have been introduced to correct clock pin changes on the Atmel AT90S4333/AT90S2333, 28-pin analog devices. Users of Rev. B boards may experience programming or running problems with these devices. This modification will correct any problems. The solution is to move the clock signal from the clock output pin to the correct input pin.

To see if your board has been modified at the factory before shipping please check the following items:

- Does the board have a handwritten /c after the serial number on the back of the board?
- Has the trace been cut as shown in Figure 2?
- Does the board have a yellow sticker over the modification area?

If any of the above apply, your board has been modified at the factory.

If none of the above are found on your board, follow the instructions below to modify your board.

People with some soldering skills may do this modification themselves. This document shows how to do the modification in a safe way.

### Required Parts

- A short piece of single strand wire, max 0.5 mm diameter and about 40 mm long.
- A small sticky label or some nail varnish.

### Required Tools

- ESD-safe workstation.
- A soldering iron.
- Solder.
- A sharp craft knife.
- Wire cutters.

### Work Description

1. This work must only take place on an ESD-safe workstation, as the STK200 contains ESD sensitive components that may be damaged if not handled correctly.
2. Place the board upside down on the workstation and familiarize yourself with the layout of the board by comparing it to the trace layout in Figure 1. Note the marked area for the modification.
3. Note the marked trace in Figure 2 and with a craft knife, cut the trace as shown by the line.
4. With the craft knife, clean off the green solder resist from the portion of trace marked in Figure 3.
5. With a soldering iron, put a small quantity of solder on the trace you have exposed on the side away from the pin as shown in Figure 3.



---

## Modification for Rev. B to Rev. C

---

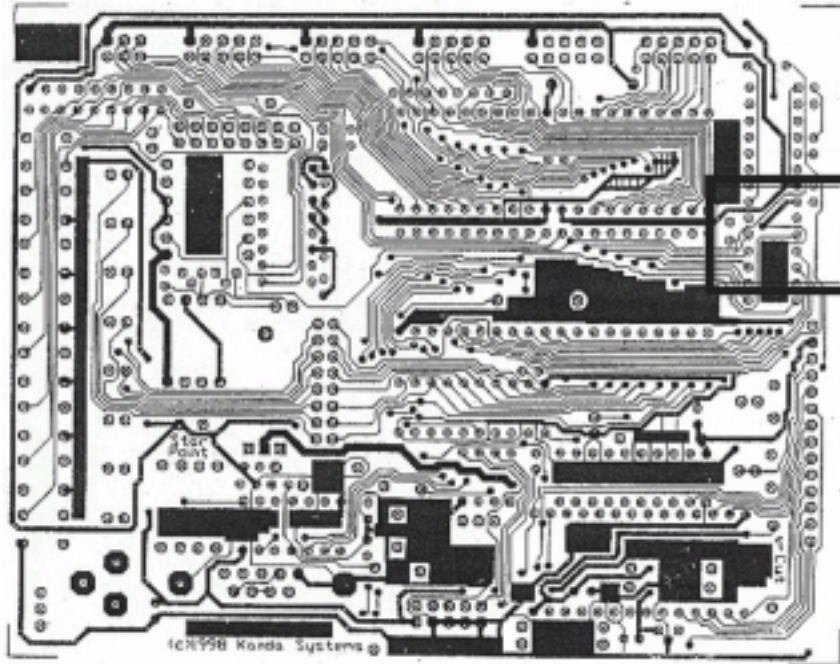
### STK200 Errata Sheet

Rev. 1462A-08/99

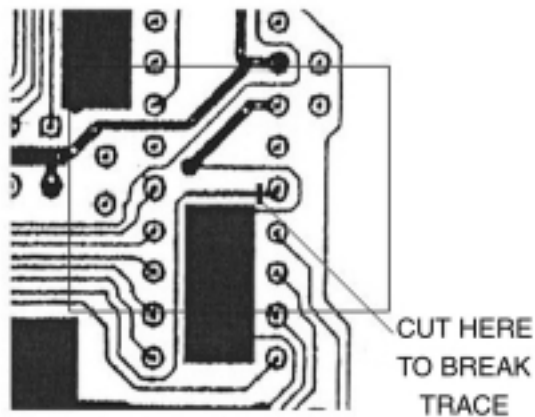


6. Take the piece of wire and tin it coat one end with the solder. Now solder it to the trace you have exposed in step 5.2 of the operation.
7. Take the wire across to the pin shown in Figure 4 and cut it to a suitable length. Tin the end and solder it to the pin.
8. Cover the wire and solder, and any exposed area of board, with a small sticky label or some clear nail varnish.
9. Your board has now been modified to work correctly with the devices.

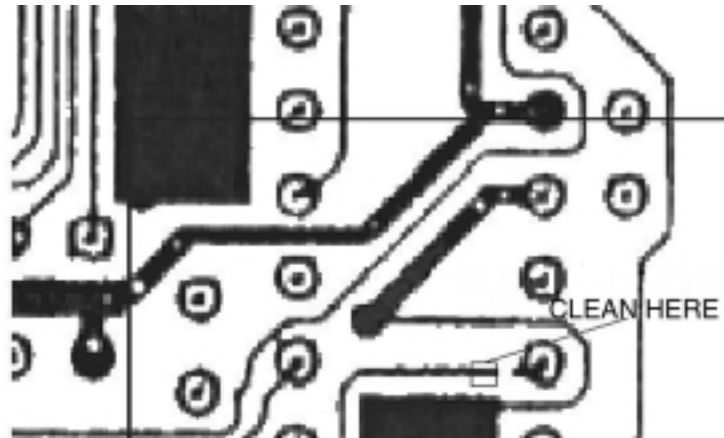
**Figure 1.** The board before modification.



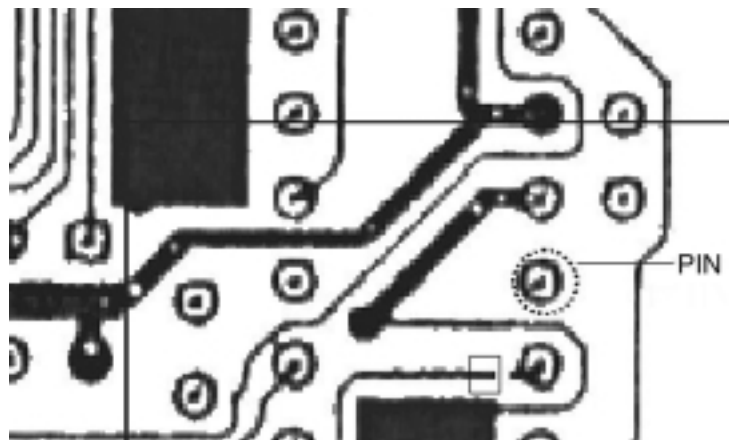
**Figure 2.** The trace to be cut.



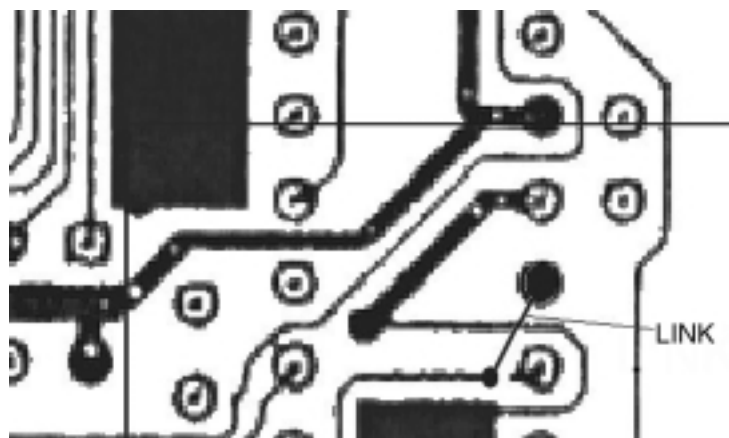
**Figure 3.** Where to clean the board.



**Figure 4.** Solder one end of the wire to this pin.



**Figure 5.** Link the other end of the wire to the cut trace.



The board is now finished.



## **Atmel Headquarters**

### ***Corporate Headquarters***

2325 Orchard Parkway  
San Jose, CA 95131  
TEL (408) 441-0311  
FAX (408) 487-2600

### ***Europe***

Atmel U.K., Ltd.  
Coliseum Business Centre  
Riverside Way  
Camberley, Surrey GU15 3YL  
England  
TEL (44) 1276-686-677  
FAX (44) 1276-686-697

### ***Asia***

Atmel Asia, Ltd.  
Room 1219  
Chinachem Golden Plaza  
77 Mody Road Tsimhatsui  
East Kowloon  
Hong Kong  
TEL (852) 2721-9778  
FAX (852) 2722-1369

### ***Japan***

Atmel Japan K.K.  
9F, Tonetsu Shinkawa Bldg.  
1-24-8 Shinkawa  
Chuo-ku, Tokyo 104-0033  
Japan  
TEL (81) 3-3523-3551  
FAX (81) 3-3523-7581

## **Atmel Operations**

### ***Atmel Colorado Springs***

1150 E. Cheyenne Mtn. Blvd.  
Colorado Springs, CO 80906  
TEL (719) 576-3300  
FAX (719) 540-1759

### ***Atmel Rousset***

Zone Industrielle  
13106 Rousset Cedex  
France  
TEL (33) 4-4253-6000  
FAX (33) 4-4253-6001

---

### ***Fax-on-Demand***

North America:  
1-(800) 292-8635  
International:  
1-(408) 441-0732

### ***e-mail***

literature@atmel.com

### ***Web Site***

<http://www.atmel.com>

### ***BBS***

1-(408) 436-4309

#### **© Atmel Corporation 1999.**

Atmel Corporation makes no warranty for the use of its products, other than those expressly contained in the Company's standard warranty which is detailed in Atmel's Terms and Conditions located on the Company's web site. The Company assumes no responsibility for any errors which may appear in this document, reserves the right to change devices or specifications detailed herein at any time without notice, and does not make any commitment to update the information contained herein. No licenses to patents or other intellectual property of Atmel are granted by the Company in connection with the sale of Atmel products, expressly or by implication. Atmel's products are not authorized for use as critical components in life support devices or systems.

Marks bearing ® and/or ™ are registered trademarks and trademarks of Atmel Corporation.

Terms and product names in this document may be trademarks of others.



Printed on recycled paper.

1462A-08/99/xM